



#### GENERAL DESCRIPTION:

When sensor is activated, it will send signal to building management system so the maintenance staff can conduct further evaluation for any obstructions at the smoke curtain.

The photo eye consists of two sensors, one on either side of the Smoke and Fire Curtain, about 6 inches above the ground. One of the sensors directs a beam toward the other; if an object interrupts the beam, the sensor breaks the circuit, sending a message to the BSM relay.

One side has amber led other side has green led units attach to brackets by head of carriage bolt (they do not have a bolt hole through them) units measure approx. 2-3/8" long with 3 feet 2-conductor wire.

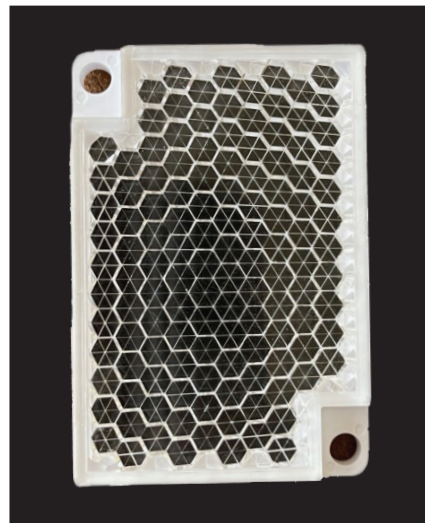
- The kit includes transmitting and receiving safety beams with 12" long wire ends
- Sensors include 15" lead of hardwired 2-strand bell wire and self-sealing connectors
- Item Weight: 5.4 ounces
- Material: Plastic
- Adjustable from 6" to 9" out.
- Simple two wire installation
- Conduit connection ready

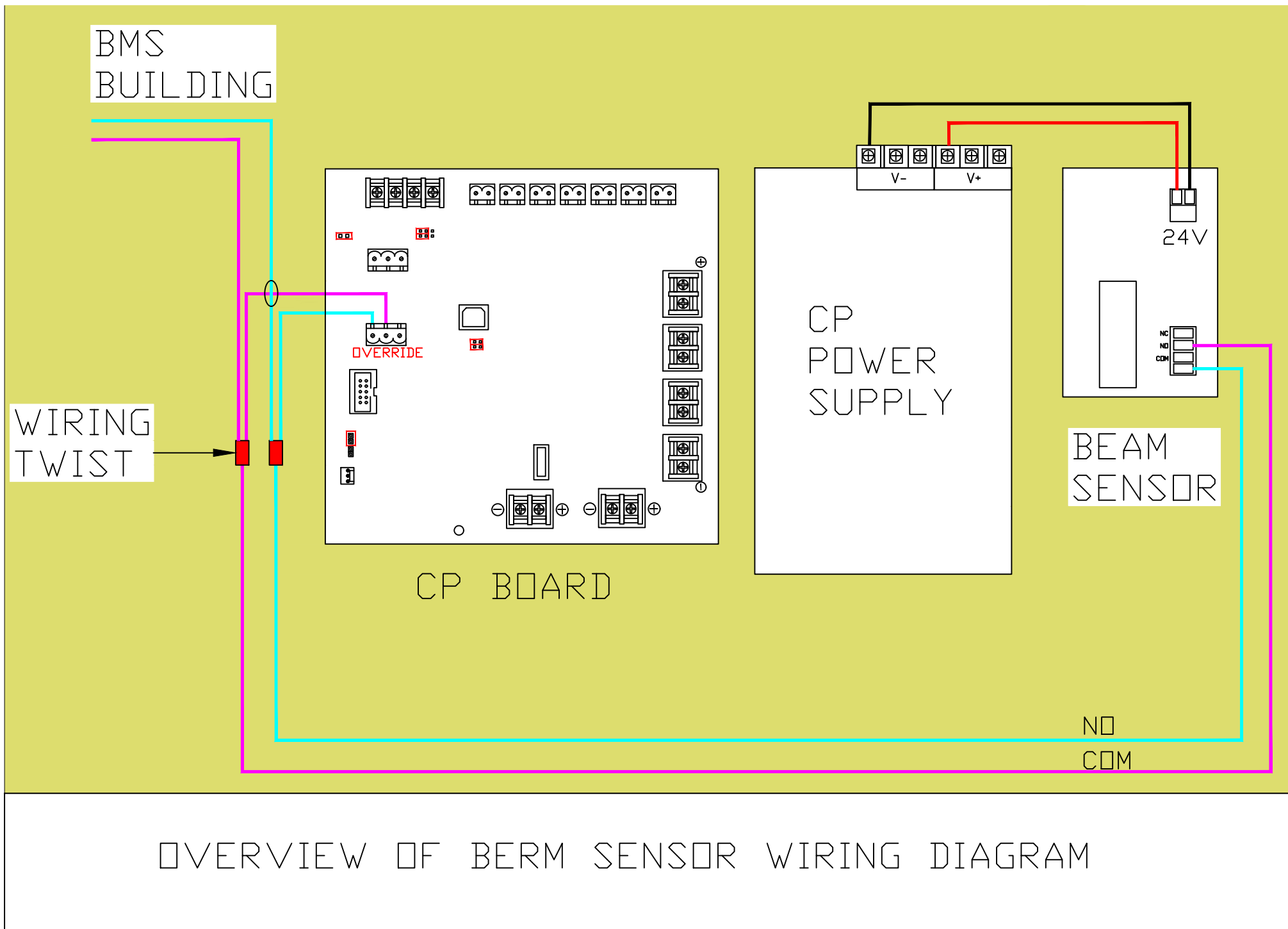
#### STANDARDS:

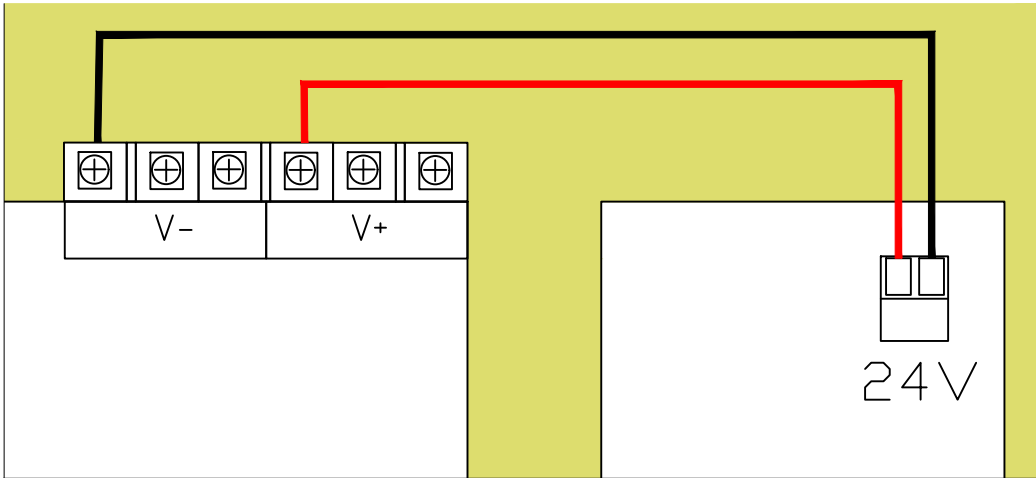
- UL325 compliant
- **NOTE:** Use of these photocells on a commercial operator does NOT make unit UL325 compliant for residential use

#### PERFORMANCE:

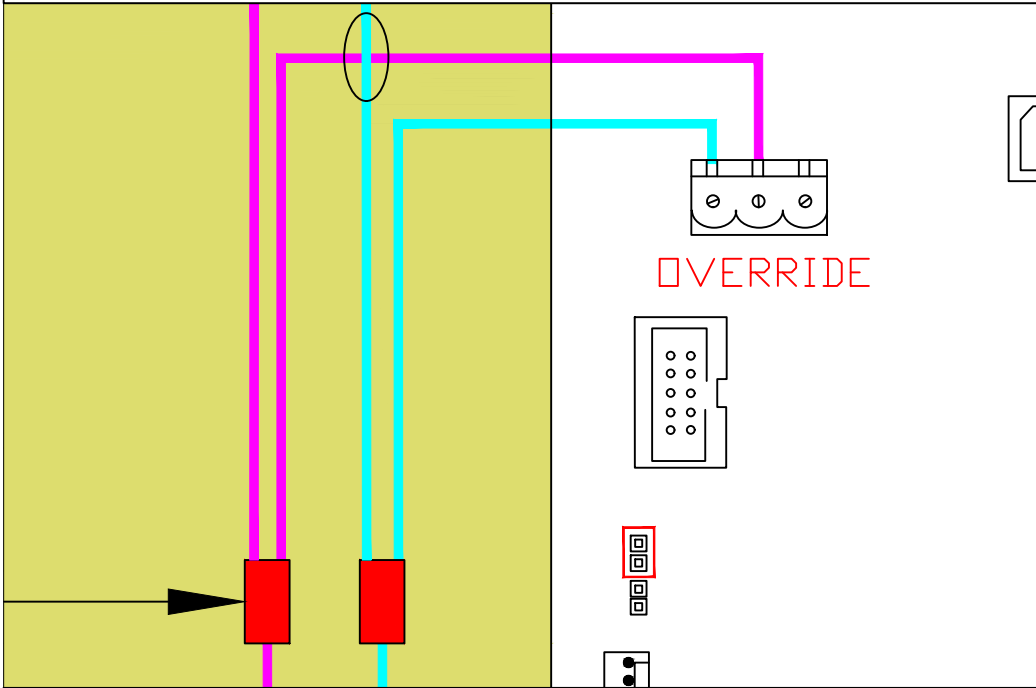
- Protection class: NEMA 4/4X
- Operation temperature: 10°F to +170°F
- Material of the housing: Thermoplastic Elastomer (TPE)
- Range / Working Distance: Up to 35 ft



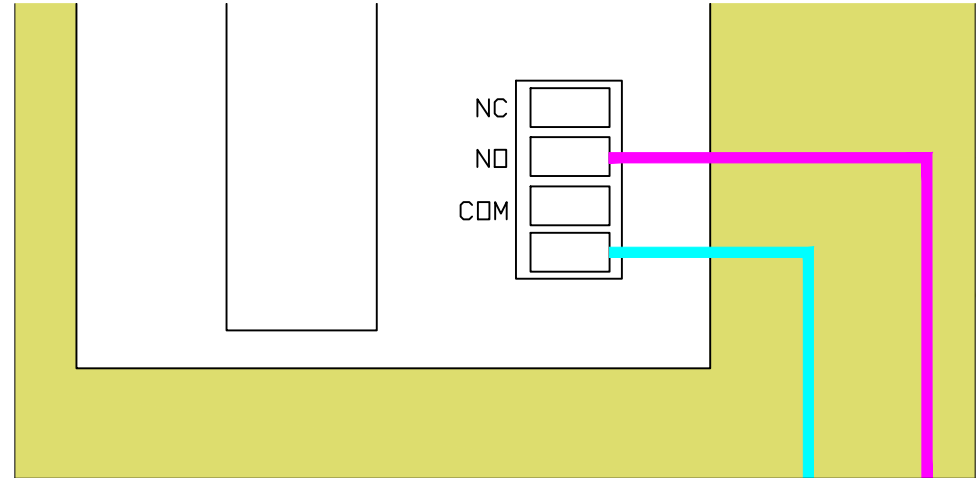




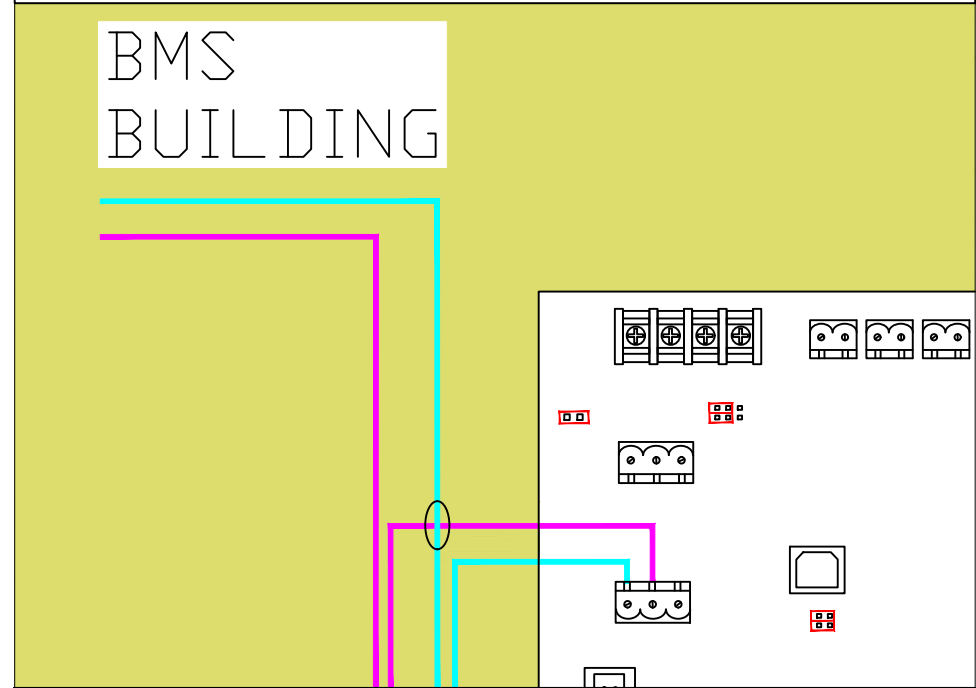
LARGE VIEW OF CP POWER SUPPLY  
TERMINAL & BEAM SENSOR TERMINAL



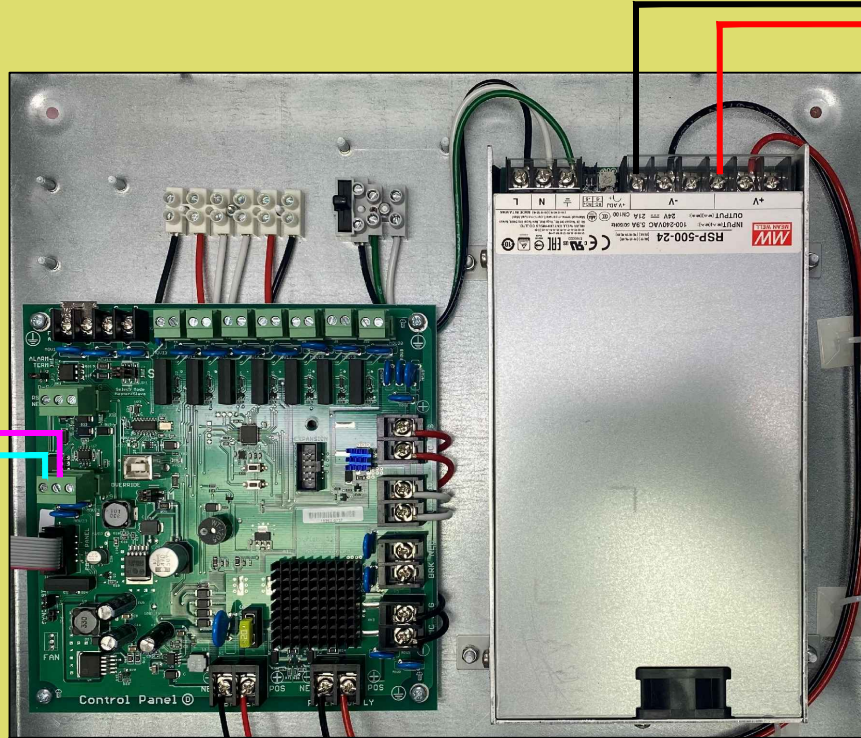
LARGE VIEW OF CP BOARD OVERRIDE  
TERMINAL & WIRING TWIST



LARGE BEAM SENSOR TERMINAL



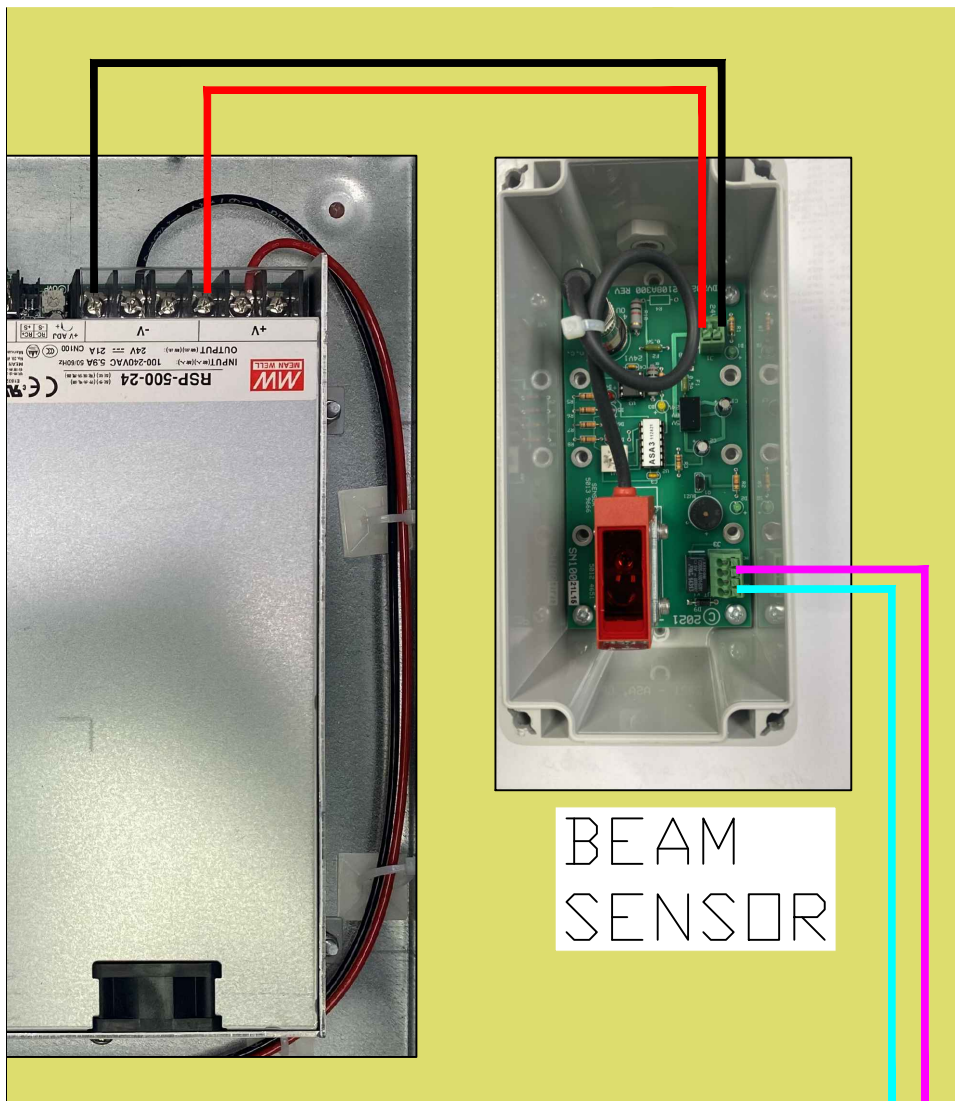
LARGE VIEW OF OVERRIDE & WIRING  
THROUGH BMS BUILDING

[illegible]

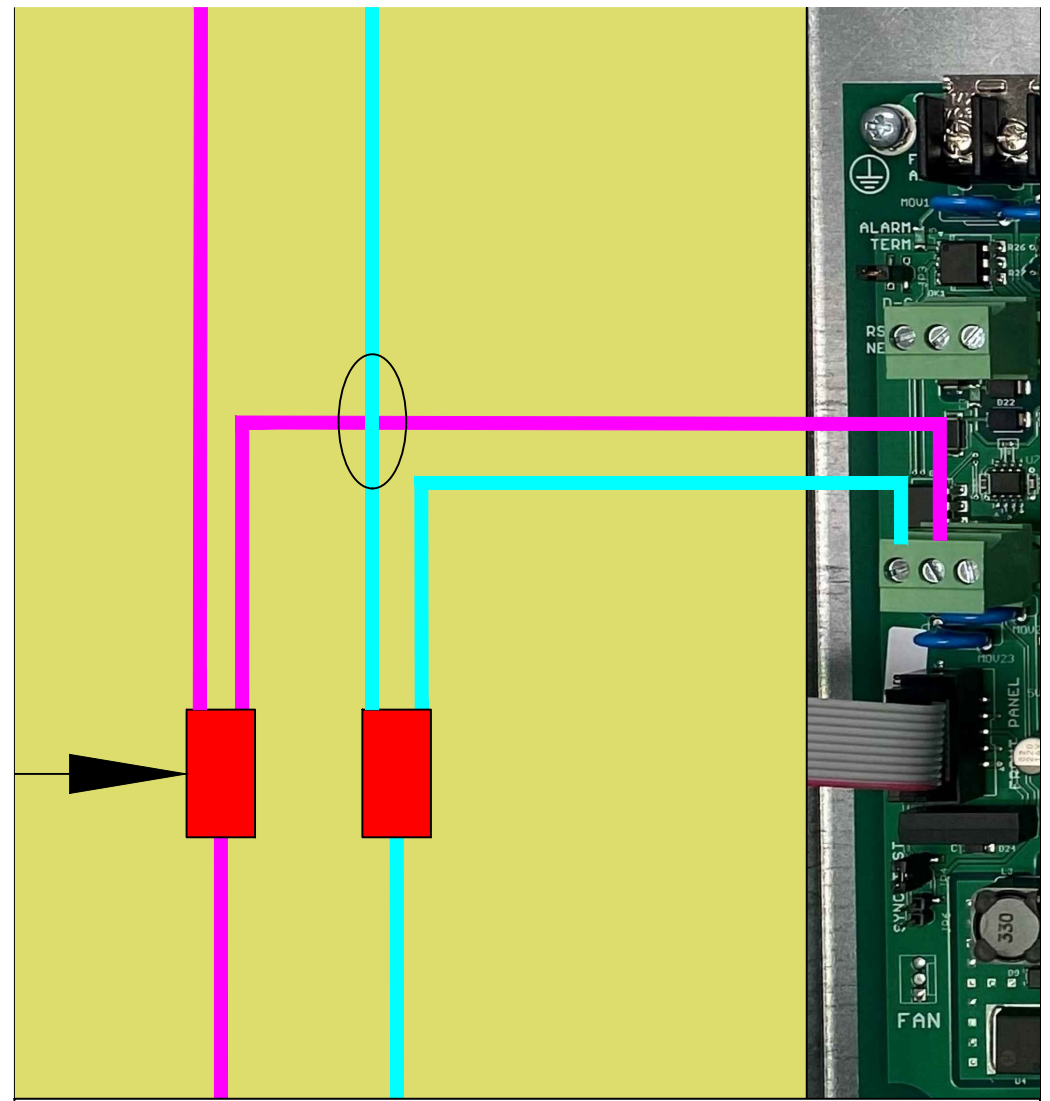
BEAM  
SENSOR

NO  
COM

# OVERVIEW OF BERM SENSOR WIRING DIAGRAM



LARGE VIEW OF CP POWER  
SUPPLY TERMINAL & BEAM  
SENSOR TERMINALS



LARGE VIEW OF OVERRIDE  
TERMINAL & WIRING THROUGH BMS  
BUILDING